



Rio Vista Natural Resource Park Tucson, Arizona

Overview and Next Steps
April 2023

RIO VISTA NATURAL RESOURCE PARK

MASTER PLAN REPORT HIGHLIGHTS | 2022

**Approved by Mayor and Council
March 21st, 2023**

OVERVIEW



In the spring of 2022, the City of Tucson Parks and Recreation Department and its consultant team began updating the Master Plan for Rio Vista Natural Resource Park. This was in response to the community's passion for making park improvements in keeping with the area's cultural heritage and natural desert characteristics.

A draft Master Plan Report was completed and is available online at:
Website address: bit.ly/riovistanpark

MASTER PLAN PURPOSE

The main purpose of the master plan is to:

- Document the park's history, its natural character, and community vision and values
- Identify the park's current uses and amenities, as well the overall condition of the park
- Establish a public consensus of goals and strategies for the park's future as a natural resource park with an existing developed component
- Establish Improvement Priorities for the park to be implemented with available public and private resources

NATURAL RESOURCE PARK DEFINITION

- Park land comprised of native desert open space that supports delicate ecological systems containing wildlife habitat, water resources, and endangered species.
- The role of the Tucson Parks and Recreation Department is to maintain, preserve, and restore when needed, the natural integrity of a resource park.
- As a guideline, no more than 15% of a designated natural resource park should include developed amenities such as those found at an urban park setting. Rio Vista Natural Resource Park has approximately 12% developed amenity space and 88% natural desert open space.

PUBLIC INPUT

Public input from visitors and nearby residents who utilize Rio Vista Natural Resource Park is crucial to determining and prioritizing improvements for the park. Input was received from the following sources and fully documented in the Master Plan Report:

- City of Tucson Parks Online Survey - April 2022 (Over 300 responses received)
- City of Tucson On-Site Public Open House - April 2022
- On-site meetings with Rillito Bend Neighborhood Association (RBNA) - May 2022
- On-site meeting with Friends of Rio Vista - May 2022

PARK IMPROVEMENT RECOMMENDATIONS

HIGH PRIORITY IMPROVEMENTS

1. Consolidate Trail Network
 - Close unwanted trails/ provide temporary barriers
 - Upgrade primary trails
 - Revegetate disturbed areas
2. Revegetate Disturbed Open Spaces
 - Repair & expand irrigation system
3. Upgrade Trail Network Signage
4. Enhance Riparian Area
5. Stormwater Harvesting
6. Enhance Interpretive Garden
7. Preserve Bird Nesting Area
8. Repair and Upgrade Perimeter Fencing
9. Upgrade Main Gate Access at Equestrian Area
10. Install New Benches

MAINTENANCE RECOMMENDATIONS

- Routine maintenance and repair of site amenities
- Restroom cleaning
- Trash collection
- Mowing large lawn areas
- Seasonal pruning of landscape shrubs and trees
- Irrigation repair

Additional maintenance for newly developed/ restored passive trail systems to the east will require a more frequent maintenance schedule during establishment period of (approximately 12-24 months) then reduce in frequency and become part of routine maintenance program. These efforts will need volunteer support.



On-Site Public Open House | April 2022



Open Grass Area



Interpretive Garden



Play Structure



Entry Plaza



Trail Network



Shannon Wash



Equestrian Area

RIO VISTA NATURAL RESOURCE PARK

MASTER PLAN | 2022






PARK IMPROVEMENT RECOMMENDATIONS

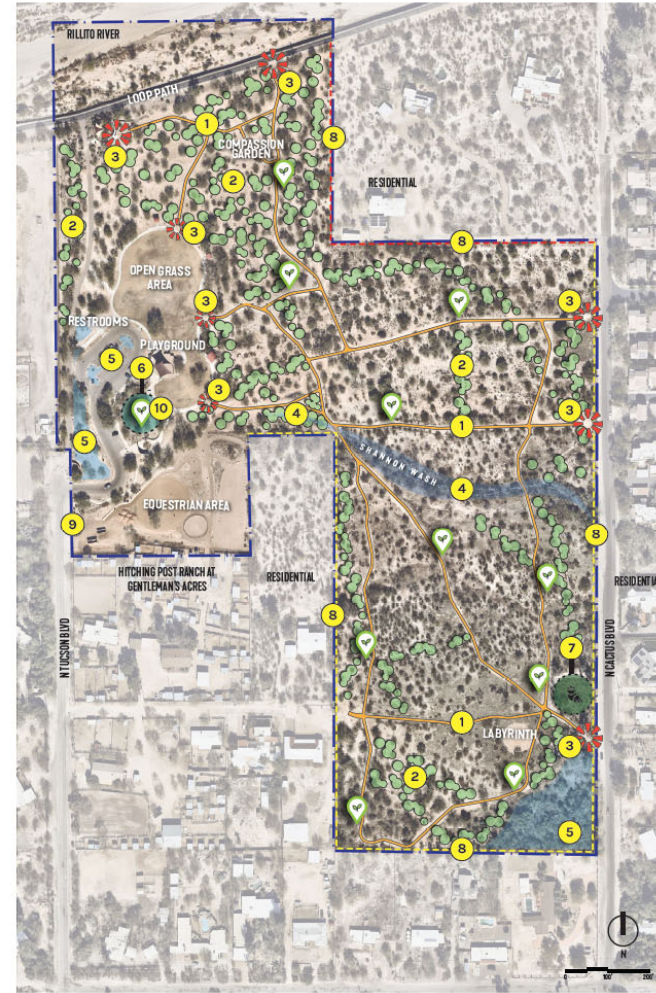
There are many park users, organizations, and neighborhood associations who are passionate about Rio Vista Natural Resource Park. Feedback from the on-line public survey, on-site meetings, and existing master plan documents influenced the following recommendations and priorities for the park.

HIGH PRIORITY IMPROVEMENTS

- 1 Consolidate Trail Network
 - Close unwanted trails / provide temporary barriers
 - Upgrade primary trails
 - Revegetate disturbed areas
- 2 Revegetate Disturbed Open Spaces
 - Repair & Expand Irrigation System
- 3 Upgrade Trail Network Signage
- 4 Enhance Riparian Area
- 5 Stormwater Harvesting
- 6 Enhance Interpretive Garden
- 7 Preserve Bird Nesting Area
- 8 Repair and Upgrade Perimeter Fencing
- 9 Upgrade Main Gate Access at Equestrian Area
- 10 Install New Benches

KEY

-  Revegetate areas with native plant material
-  Trail Network
-  New Perimeter Fence
-  Existing Perimeter Fence
-  Entry to Trail Network with Signage
-  Node with Interpretive Signage



Park Improvements

Approved by Mayor and Council
March 21st, 2023

PARK IMPROVEMENT RECOMMENDATIONS

HIGH PRIORITY IMPROVEMENTS

1. Consolidate Trail Network
 - Close unwanted trails/ provide temporary barriers
 - Upgrade primary trails
 - Revegetate disturbed areas
2. Revegetate Disturbed Open Spaces
 - Repair & expand irrigation system
3. Upgrade Trail Network Signage
4. Enhance Riparian Area
5. Stormwater Harvesting
6. Enhance Interpretive Garden
7. Preserve Bird Nesting Area
8. Repair and Upgrade Perimeter Fencing
9. Upgrade Main Gate Access at Equestrian Area
10. Install New Benches

MAINTENANCE RECOMMENDATIONS

- Routine maintenance and repair of site amenities
- Restroom cleaning
- Trash collection
- Mowing large lawn areas
- Seasonal pruning of landscape shrubs and trees
- Irrigation repair

Additional maintenance for newly developed/ restored passive trail systems to the east will require a more frequent maintenance schedule during establishment period of (approximately 12-24 months) then reduce in frequency and become part of routine maintenance program. These efforts will need volunteer support.

Next Steps: Trail Network Improvements

COT Parks has hired the Watershed Management Group (WMG) consultant team to develop plans/construction documents (CDs) and specifications to implement trail network improvements.

1. Hold on-site meeting with stakeholders to review WMG draft plans.
2. Confirm trails to be closed. Confirm primary trails to be improved. Confirm trail users for each trail: bike, ped, equestrian. Confirm water harvesting areas.
3. Develop specifications/instructions and schedule for trail closure process: which trails should be closed first, method/barricading and signage, phasing of work.
4. Develop specifications for revegetating closed trails: soils, plants, hardscape, schedule, maintenance
5. Meet with Parks irrigation manager to identify irrigation system improvements
6. Bid out trail work to contractors and/or trail building agencies
7. Hire contractor to perform work with oversight by Parks staff and WMG team.

Next Steps: Kiosks and Signage

Design and construct new kiosks and signage for park entrances

- Purpose of kiosk and signs: wayfinding, park rules, educational
- Number of sign faces per kiosk: 2,3,4?
- Size of sign faces and kiosk
- Shape of kiosk: flat, triangle, square, number of legs?
- Features: top/roof, security, anchoring, footers
- Material and color
- Maintenance and security
- Quantity of kiosks and locations
- Signage development: wording, graphics, production
- Installation

existing signage





Signage and Kiosk Examples

Purpose, size, shape, color, material, durability, maintenance



City of Tucson Parks and Recreation Community Park rules sign

- 37" wide x 39" high
- Hours size for the Community Parks: 37" wide x 6.2537" high
- Header font is: Lato Black 306 pt.
- Body text is: Lato regular 78 pt.



Example:
Custom metal kiosk
for Jefferson Park



More Information

- Tom Fisher, Project Manager
- City of Tucson Parks and Recreation Department
- tom.fisher@tucsonaz.gov
- (520) 837-8037

